

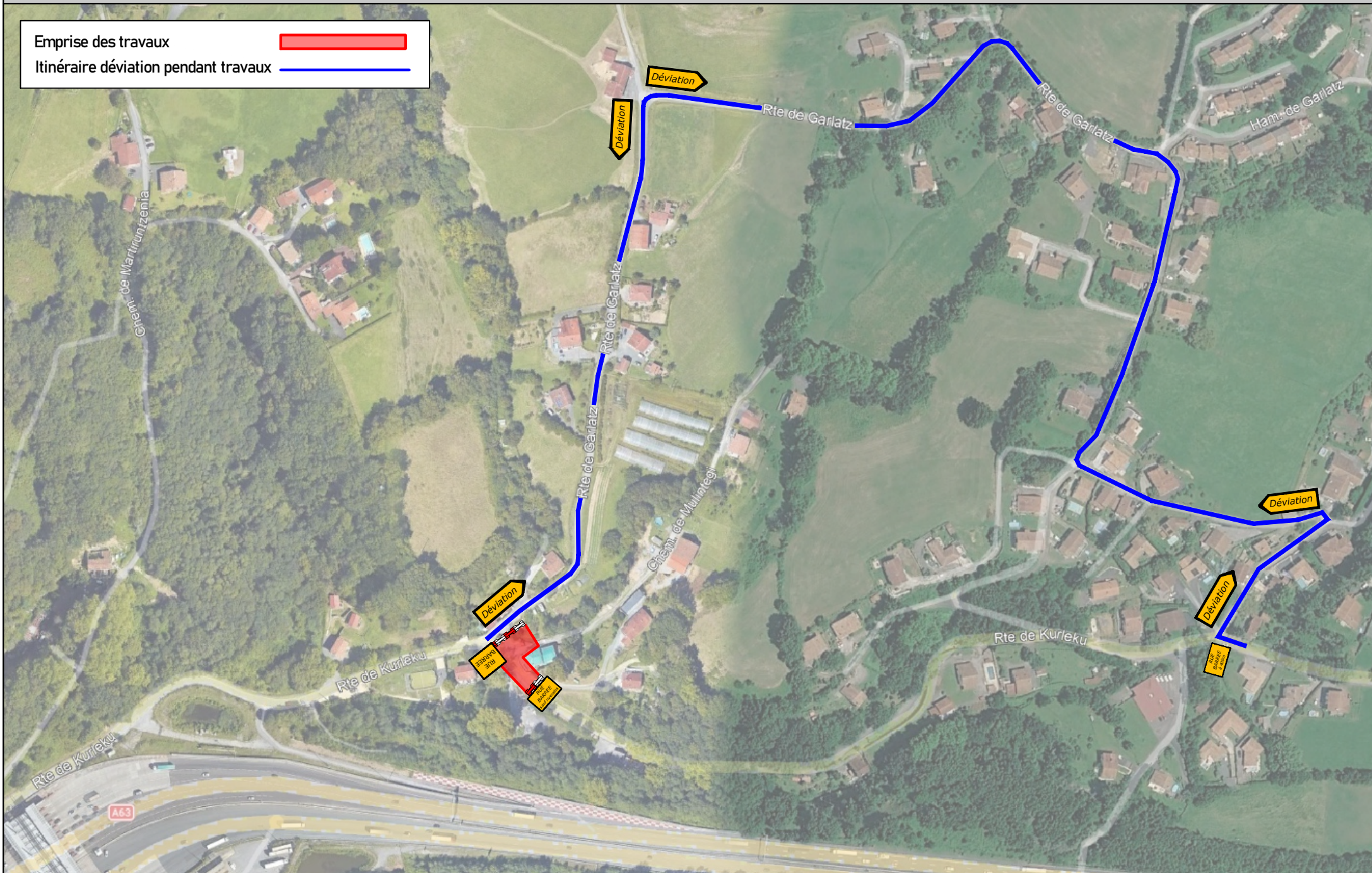



Aménagements hydrauliques pluviaux - Bassin versant Azkenia

Emprise des travaux 
Itinéraire déviation pendant travaux 



BIRIATOU- Chemin rural dit de Garlatz - Phase 2

Aménagements hydrauliques pluviaux - Bassin versant Azkenia

Emprise des travaux 
Itinéraire déviation pendant travaux 